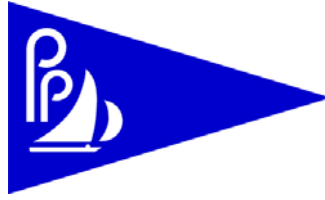


Percy Priest Yacht Club



Fall Off Regatta Sailing Instructions

1. RULES

- 1.1. The regatta will be governed by the *rules* as defined in *The Racing Rules of Sailing* (RRS).
- 1.2. Changes will be made to the following RRS for the distance course classes:
29.1 (Individual Recalls); 32.2 (Shortening of Course after the Start); 35 (Time Limit and Scores);
61 (Protest Requirements); 62.1(a) (Redress); A4 (Low Point and Bonus Point Systems);
A5 (Scores Determined by the Race Committee); and Race Signal AP (Postponement).

2. **NOTICES TO COMPETITORS** – Notices to competitors will be posted on the official notice board which will be located on the windows of the Hamilton Creek Sailboat Marina building facing the deck.

3. CHANGES TO SAILING INSTRUCTIONS

- 3.1. Any change to these Sailing Instructions will be posted on the official notice board at least one hour before the scheduled start of the race.
- 3.2. The schedule of races will not be changed.

4. SIGNALS MADE ASHORE

- 4.1. Signals made ashore will be displayed from the race committee boat at the dock.
- 4.2. When flag "AP" is displayed ashore, '1 minute' is replaced with 'not less than 30 minutes' in the Race Signal "AP." This changes the meaning of Race Signal "AP."

5. **SCHEDULE OF RACES** – The race schedule, date of racing, scheduled time of the warning signal for the race will be as stated in the Notice of Race. The Notice of Race will be posted on the official notice board.

6. CLASS FLAGS

- 6.1. Classes will be as defined in the Notice of Race.
- 6.2. A class flag will be a unique color, pattern, shape or class logo. A description of each class flag will be posted on the official notice board.
- 6.3. Reminder – as stated in the preamble to Race Signals: "When a visual signal is displayed over a class flag, the signal applies only to that class."

7. **RACING AREA** – The racing area will be the area covered by the distance courses used.

8. **MARKS** – Descriptions of the marks will be posted on the official notice board or attached to these Sailing Instructions as an addendum.

9. **COURSES** – Descriptions and diagrams of the courses will be posted on the official notice board or attached to these Sailing Instructions as an addendum.

10. THE START

- 10.1. The starting order for classes will be posted on the official notice board.
- 10.2. The starting line will be between a staff displaying an orange flag on the race committee boat at the starboard end and the starting mark at the port end.
- 10.3. The race committee may, no later than the warning signal, trail a mark from the stern of the race committee boat stationed at the starboard end of the starting line. The trailing mark will be considered to be an extension of the race committee boat. A boat shall not pass between the trailing mark and the race committee boat. A boat shall not touch the trailing mark before starting.
- 10.4. Boats whose warning signal has not been made shall avoid the starting area during the starting sequence for other classes.
- 10.5. A boat starting later than 5 minutes after her starting signal will be scored as Did Not Start without a hearing. This changes RRS A4 and A5.

11. RECALLS – When an individual recall is signaled, the race committee may at its discretion attempt to hail the sail numbers of the recalled boats. The hail may be by VHF radio on Channel 68, or by loud hailer or bullhorn. Such a hail is a courtesy hail only. Failure of the race committee to hail, failure of a boat to hear the hail, or the order or timing of the hail will not relieve the boat of its obligation to start correctly and will not be grounds for requesting redress. This changes RRS 29.1 and 62.1(a).

12. SHORTENING OF COURSE AFTER THE START – When a distance course is shortened after the start, a race committee boat will drop a new finishing mark in an obvious location within a leg of the course being sailed. The new finishing line will be between a staff displaying flag "S" (shortened course signal flag) on the race committee boat end and the new finishing mark at the other end. This changes RRS 32.2.

13. THE FINISH – A description of the finishing line will be posted on the official notice board or attached to these Sailing Instructions as an addendum.

14. TIME LIMIT

- 14.1. The time limit for the first boat in a class to finish will be the earlier of three (3) hours after the start of the class or 1530 hours (3:30 pm).
- 14.2. If a boat in a class sails the course and finishes within the time limit, only those boats in the same class finishing within one (1) hour of the first finisher will be counted as finishing. This changes RRS 35.

15. PROTESTS

- 15.1. A boat intending to protest shall attempt to notify the finish line race committee boat of its intent to protest and identify the protested boat at the first reasonable opportunity. This changes RRS 61.
- 15.2. Protests and requests for redress or reopening shall be written and delivered to the protest committee chairperson within the protest time limit which ends 30 minutes after the race committee boat docks.
- 15.3. Protests will then be heard as soon as possible, in approximately the order of receipt.

16. SCORING

- 16.1. One race will be sailed and scored.
- 16.2. Wind dependent Portsmouth handicaps assigned by PPYC will be used for scoring.

17. COURTESY BROADCASTS

- 17.1. The race committee may make periodic courtesy broadcasts by VHF radio on Channel 68. Information reported is provided as a courtesy to the competitors and does not in any way alter the competitor's responsibility to observe the race committee's visual signals. Errors or omissions during these courtesy broadcasts will not be grounds for requesting redress. This changes RRS 62.1(a).
- 17.2. The race committee will only respond to hails or communications from a competitor in the event of an emergency, to acknowledge that a boat has retired from a race or for other valid reasons at the discretion of the race committee. Competitors should refrain from attempting to communicate with the race committee by radio.

- 18. SAFETY REGULATIONS** – A boat that retires from a race shall notify the race committee as soon as possible.
- 19. USE OF ENGINE PERMITTED AFTER GROUNDING** – In accordance with RRS 42.3(h), a boat is allowed to use its engine to get clear after grounding as long as the boat does not advance its position while under power. Once a boat gets clear it must immediately stop its engine and continue sailing.
- 20. PRIZES** – Prizes will be awarded as indicated in the Notice of Race.
- 21. DISCLAIMER OF LIABILITY** – Competitors participate in the regatta entirely at their own risk. See RRS 4, Decision to Race. Percy Priest Yacht Club will not accept any liability for material damage or personal injury or death sustained in conjunction with or prior to, during, or after the regatta. Competitors agree that the race organizers (organizing authority, race committee, protest committee, host club, sponsors, or any other organization or official) will not be responsible for damage to any boat or other property or the injury to any competitor, including death, sustained as a result of participation in this event. As an inducement to the race organizers to produce the regatta, each competitor agrees that by participating in this event each competitor is deemed to have waived all claims against and released the race organizers from any and all liability associated with such competitor's participation in this event to the fullest extent permitted by law and is deemed to have warranted that he has obtained this same release of the race organizers by each crew member.
- 22. INSURANCE** – Each participating boat shall be insured by its owner with valid third-party liability insurance.

Addendum to Distance Course Sailing Instructions

Courses, Marks and Finish

A 1. MARKS

- A 1.1. The starting mark will be an orange tetrahedron.
- A 1.2. The optional windward mark will be a yellow tetrahedron.
- A 1.3. The finishing mark will be a yellow cylinder.
- A 1.4. The rounding mark on Course X ("Short Course") will be a yellow tetrahedron.
- A 1.5. The optional mark in Sailing Instruction 10.3 may be any shape or color.
- A 1.6. Other marks of the course will be channel markers (Course B only), grouped rock markers (Course D, L & W only), single rock marker (Course W only) and islands as indicated in the course descriptions in A 2. See the course diagrams on Attachments A, B and C (Attachments A, B and C do not show the optional windward mark).

A 2. COURSES

- A 2.1. Distance Courses will be either B, D, L, I, W, or X or any combination of these (BD, LI, DID, etc.).
- A 2.2. **Course Diagrams (Attachments A, B and C)** – See the course diagrams on Attachments A, B and C. Attachments A, B and C do not show the optional windward mark. The written course descriptions below will control when determining the course.
- A 2.3. **Optional Windward Mark** -- At the option of the race committee, a mark may be set to windward of the starting line to create a windward first leg. If the optional "windward mark" is used, the race committee will indicate the required side on which the windward mark shall be left by posting either the letter "P" for port or "S" for starboard. The bearing to the mark will be indicated after the "@" symbol. See Diagram 1 for an example. The optional windward mark will be a mark of the course only on the first leg of the course and shall be rounded only once.
- A 2.4. **Course B ("Bridge" Course)** -- Sail from the starting line (or optional windward mark) toward the bridge leaving "Bear" Island to STARBOARD. Pass any RED and GREEN channel markers on the required side. A channel marker that is missing or has drifted substantially from its normal position does not have a required side. Round the last GREEN channel marker nearest the bridge leaving it to PORT. Sail back to the finishing line, passing the RED and GREEN channel markers on their required side, and leaving "Bear" Island to PORT.
- A 2.5. **Course D ("Dam" Course)** -- Sail from the starting line (or optional windward mark) toward the dam leaving "Luau" Island, "Stone" Island and the "Grouped" Rock Markers (northeast of "Luau" Island) to PORT. Round "Goose" Island to PORT. Sail toward "Luau" Island leaving the "Grouped" Rock Markers, "Luau" Island and "Stone" Island to PORT and continue sailing back to the finishing line. The single rock marker east of "Luau" Island and "Stone" Island is not a mark on Course D and does not have a required side.
- A 2.6. **Course L ("Low Water Dam" Course)** -- Sail from the starting line (or optional windward mark) toward "Stone" Island (between Elm Hill and Hamilton Creek) leaving it, "Luau" Island and the "Grouped" Rock Markers (northeast of "Luau" Island) to STARBOARD. Sail toward the dam rounding "Goose" Island to PORT. Sail back toward "Luau" Island leaving the "Grouped" Rock Markers, "Luau" Island and "Stone" Island to PORT. Continue by sailing back to finishing line.
- A 2.7. **Course I ("Island" Course)** -- Sail from the starting line (or optional windward mark) toward "Bear" Island and leave it to STARBOARD. Then sail a southwesterly heading toward "Pig" Island (the island south of "Bear" and "Raccoon" Islands). Round "Pig" Island to PORT. Sail back to the finishing line leaving "Bear" Island to PORT.
- A 2.8. **Course W ("Wednesday Night" Course)** -- This course will be used only if the water level is sufficient. Sail from the starting line (or optional windward mark) to the "Single" Rock Marker (white buoy) that is east of "Luau" Island and "Stone" Island. Round the "Single" Rock Marker to PORT. Continue sailing leaving all of the "Grouped" Rock Markers to PORT. Sail back to the finishing line leaving "Luau" Island and "Stone" Island to PORT.
- A 2.9. **Course X ("Short" Course)** – Course X is a short course that uses an inflatable mark as the rounding mark (see A 1.4 for a description of the mark). If this course is used, the inflatable mark will be placed in the general area north of "Bear" Island and east of "Stone" Island. Sail from the starting line (or optional windward mark) to the inflatable mark. Round the inflatable mark to PORT and sail back to the finishing line.

- A 2.10. **Single Rock Marker** -- The single rock marker east of "Luau" Island and "Stone" Island has a required side only on Course W.
- A 2.11. **Combination Courses** (BD, LI, DID, etc.) -- When the course to be sailed is a combination of two or more courses, sail them as one course without returning to the starting/finishing line between courses. For example if the course is LI, sail Course L exactly as stated above, but instead of returning to the starting/finishing line, continue sailing and sail Course I exactly as stated above.
- A 2.12. **Optional Inflatable Mark Instead of Island** – At the option of the race committee, an inflatable mark may be used as the rounding mark instead of the island indicated in any of the course descriptions above. If used, a written notice will be posted on the notice board describing the course(s) affected and giving a description of the mark to be used.
- A 2.13. **Course Designation** – The course will be displayed on the starboard side of the race committee boat before the warning signal of each class (see Diagram 1 below for an example). Courses may be different for each class and each race.

DIAGRAM 1–Course Designation Example

L @225 S

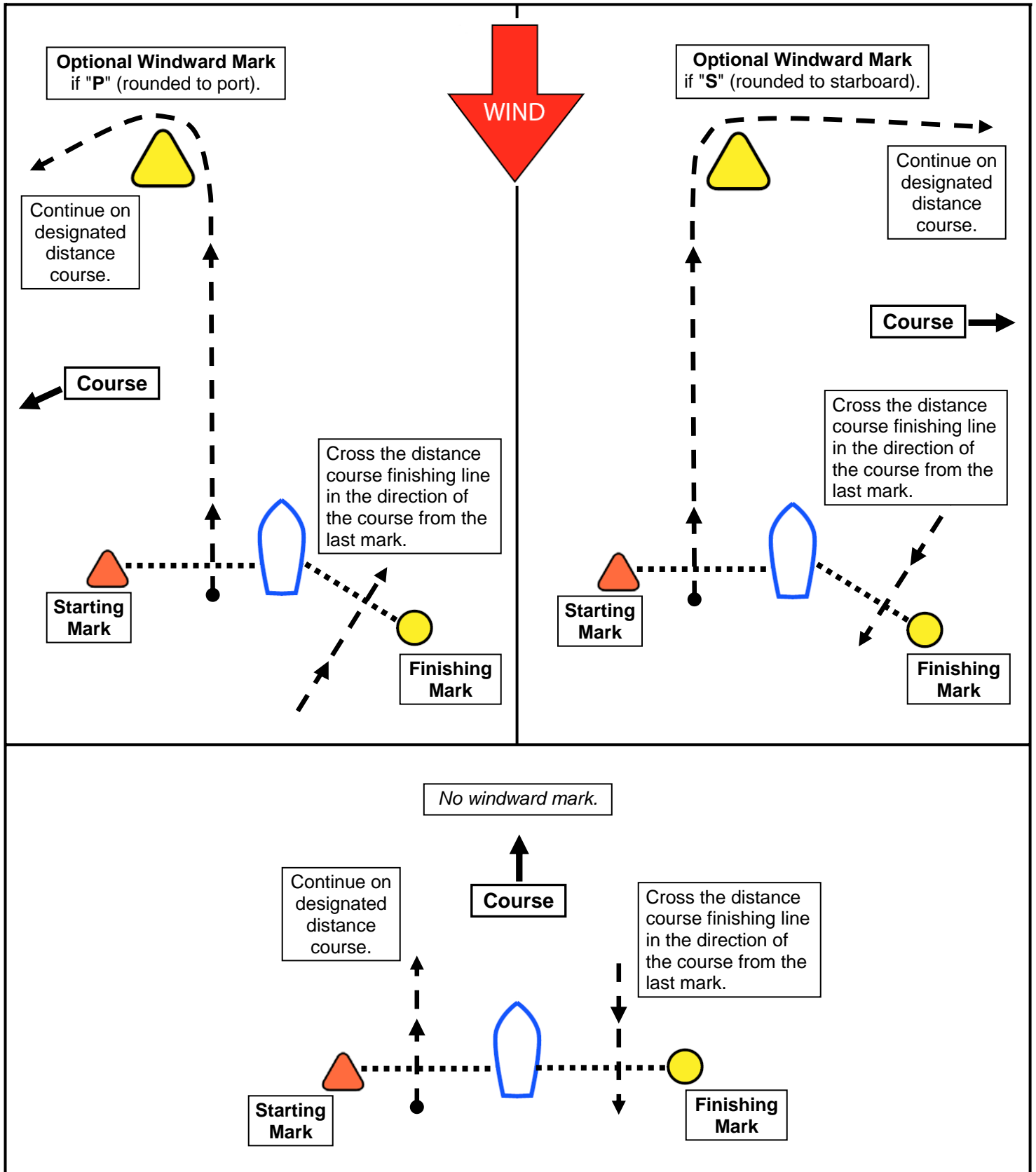
In this example, the course is L ("Low Water Dam"). The **windward mark** is at an approximate bearing of 225° from the race committee boat and is rounded to starboard (leave the mark on your starboard side).

- A 2.14. **The starting and finishing lines will be separate lines set on opposite sides of the race committee boat.** The starting mark will be set on the race committee boat's port side and the finishing mark will be set on the race committee boat's starboard side. See the attached "Starting Line, Finishing Line and Optional Windward Mark Examples."

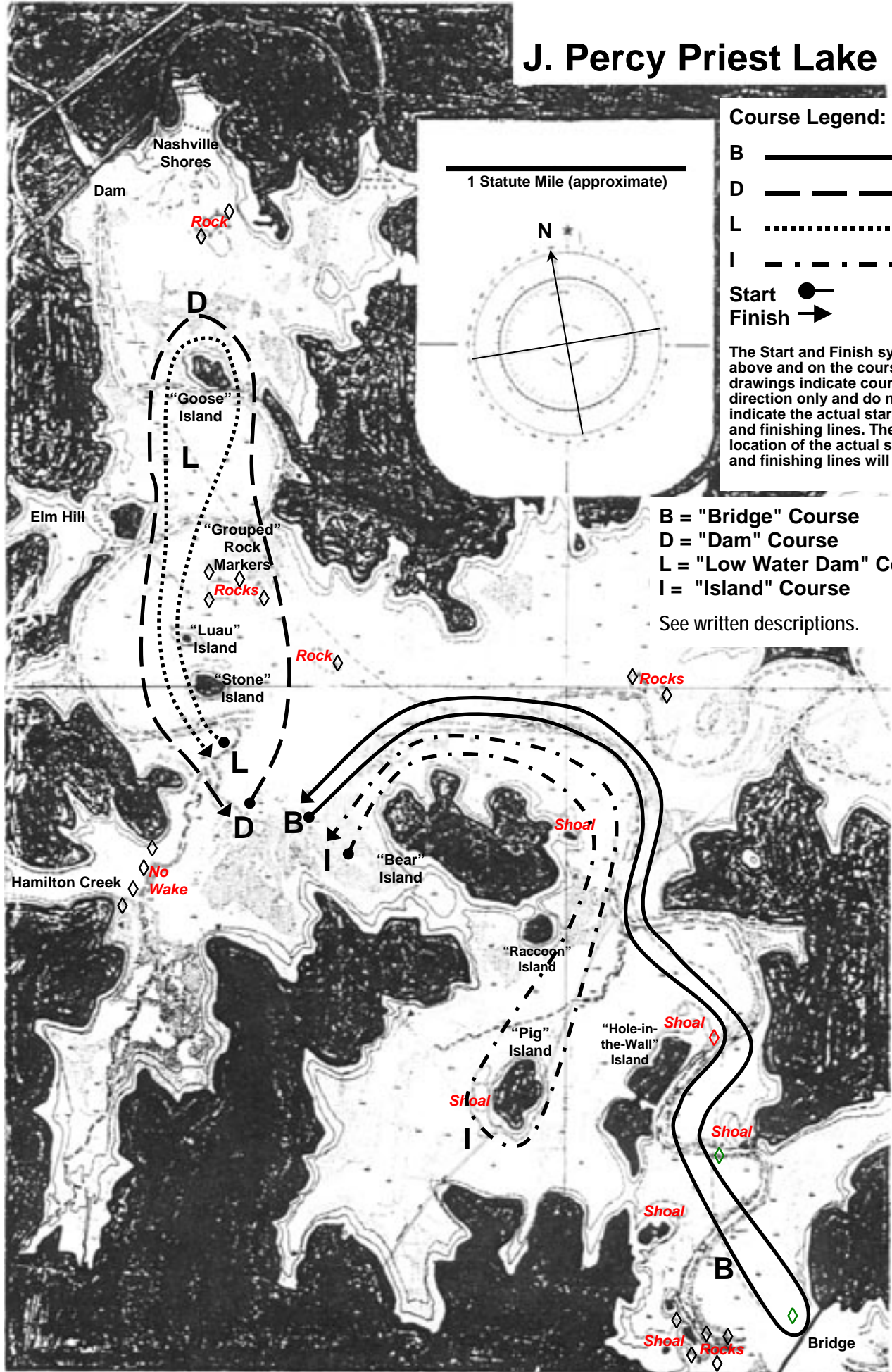
- A 3. THE FINISH** – The finishing line will be between a staff displaying a blue flag on a race committee boat and the nearby distance course finishing mark (see A 1.3 for a description of the finishing mark). As stated in the definition of *Finish* in the RRS, cross the finishing line "in the direction of the course from the last mark" regardless of which side of your boat the finishing mark is on.

Starting Line, Finishing Line and Optional Windward Mark Examples for Distance Courses

EXAMPLES ONLY--Please read Sailing Instructions A 1, A 2.3, A 2.13, A 2.14 and A 3.



J. Percy Priest Lake



Course Legend:

- B
- D
- L
- I

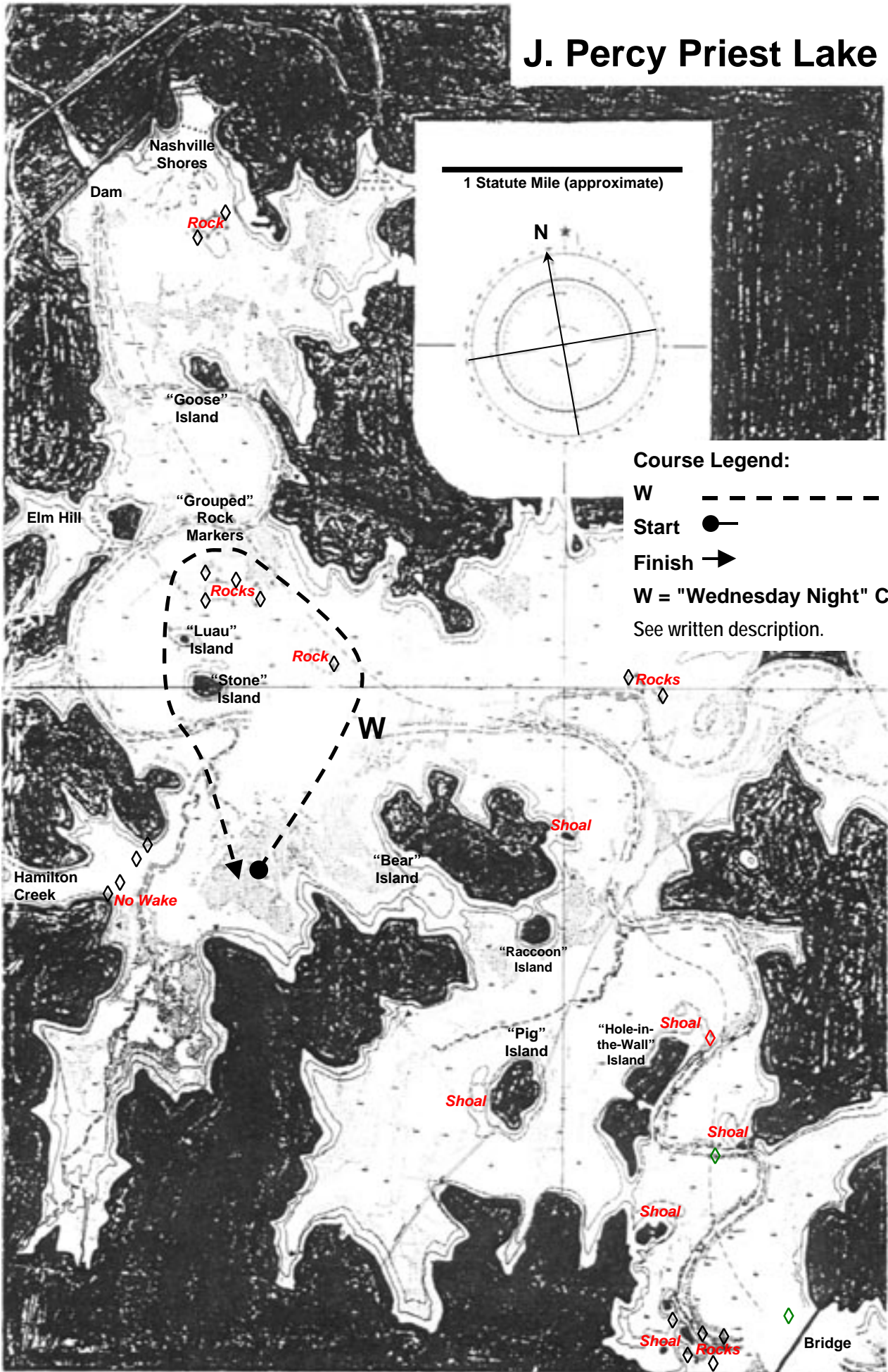
Start

Finish

The Start and Finish symbols above and on the course line drawings indicate course direction only and do not indicate the actual starting and finishing lines. The location of the actual starting and finishing lines will vary.

- B = "Bridge" Course
 - D = "Dam" Course
 - L = "Low Water Dam" Course
 - I = "Island" Course
- See written descriptions.

J. Percy Priest Lake



J. Percy Priest Lake

